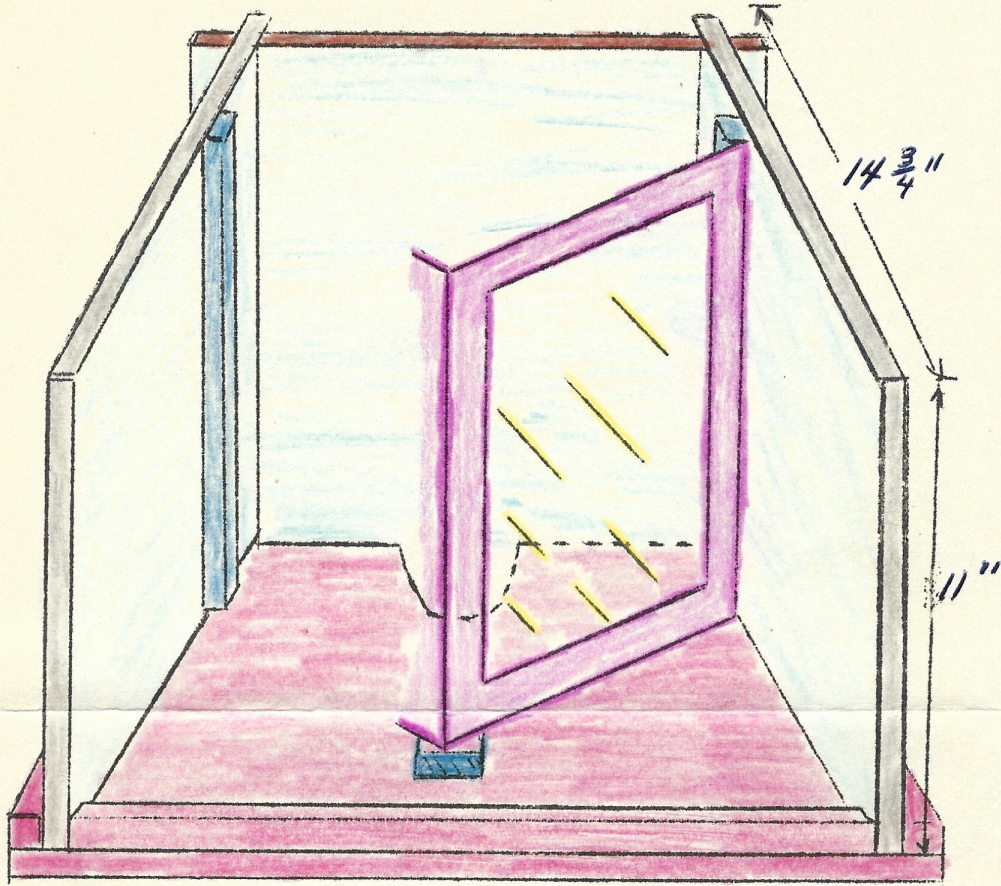


FLAT MODEL HEAD CHEST

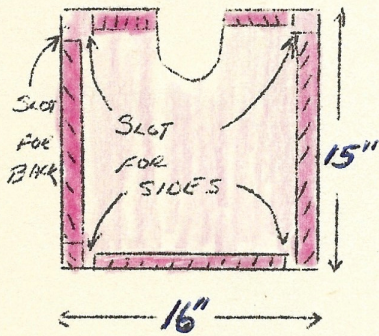
U. F. GRANT RELEASE

The flat Model Head Chest is a miniature illusion that is comparable to any large stage illusion of similar nature and requires a great deal less handling and expenses. In fact, it packs into a carton 16 inches by 16 inches by 3 inches and weighs less than four pounds. The illusionette consists of a tray and a 3 fold screen with the open side towards the audience. The rapidity of assembly before the audience is due to the interslotting of the sides and back. Once you have the outfit, it practically explains itself. Have person step forward and place them on a low chair or stool facing the audience. Place the tray around their neck and then assemble the outside boards around their head, by sliding the end boards into slots on back board and tray. Poke a silk into each of the four holes. Have the covers on the front of the hinged two fold screen so as to hide the fact there are mirrors in the screen. Now place the two fold screen in front of persons face so center of same locks behind center block, and ends go against strips at each side of outside screen. Now when you remove the slides from the hinged small screen, thanks to mirror reflections, the head is gone and they apparently see clear to rear, and see silks thru holes at rear. Step to rear side of outfit and as one hand at side pulls silk out of that hole, other hand at rear pulls silk out of that hole. Then stick fingers in these two holes and wiggle them around and they apparently see finger at rear hole. Slip silks back in and do same at other side of outfit. Replace the screen slides and pull two fold screen aside and head is restored.

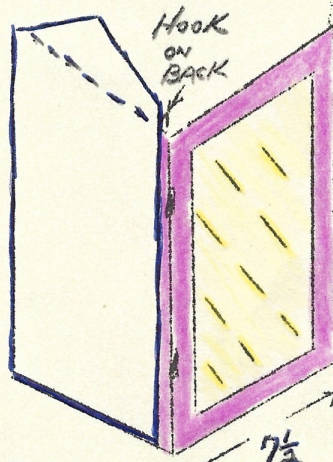
FLAT MODEL HEAD CHEST



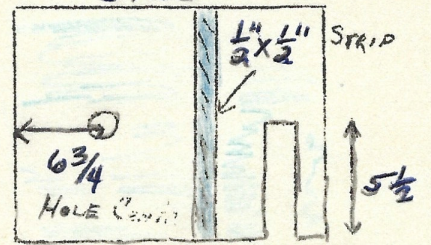
TRAY



SMALL HINGED FOLDING SCREEN SIDE



SCREEN COVER IN PLACE



BACK

